

## Metex StreamSentry – Water Analyzer and Control System

### Overview

The MX StreamSentry is a plug-and-play solution for in-line water quality monitoring applications. Easily customizable to meet your specific needs, the StreamSentry offers free real-time data management and tracking of key performance indicators including flow rate, temperature, pH, total dissolved and suspended solids, corrosion, and more! For remote situations, a solar-powered version with cellular data has you covered, while multiple relay outputs allow for immediate control on out-of-spec measurements. Designed for ease of use, each unit ships fully assembled and pressure-tested, for quick installation in pipe sizes between ¾" to 4" and flow rates between 3 – 1100 GPM. Sensors can be accessed and calibrated without having to isolate the main supply or discharge lines, preventing any disruption to your operations.

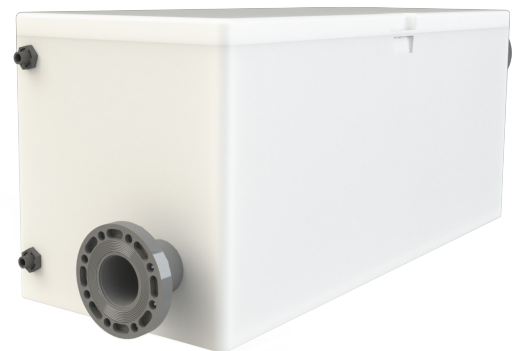
Common applications include, but are not limited to:

- Well and potable water quality
- Sewer discharge permit compliance
- Stormwater monitoring
- Industrial processes (closed loops, cooling towers, wastewater, etc.)
- Agricultural water management



### Features of the MX StreamSentry

- Operator-friendly industrial water treatment controller with datalogging, alarms, and full colour touchscreen display.
- Remote connectivity and free data management dashboard. Can be used for multiple units to create a fleet view.
- Mix-and-match sensors to meet your specific water quality needs. Easily swap or change sensor configurations at any time as needs change
- Designed for in-line installation, one inlet, one outlet
- Discrete, lockable weather-proof enclosure available in either metallic or non-metallic variants. Custom colours available



MX StreamSentry side angle

**CONTACT US TODAY!**

**Table 1 - StreamSentry Specifications**

Specifications	Details
Enclosure dimensions (L x W x H)	60" x 24" x 24.25"
Enclosure materials	HDPE, UV protected (standard) or powder coated carbon steel (special order item).
Weight	100 lbs
Mounting	Floor mounted, must be level.
Electrical requirements (standard version)	115 VAC +/- 10%, 50 or 60 Hz, 7 A maximum. System ships with a single USA pigtail connection and 6 ft of power cord.
Controller inputs/outputs	Up to 4 sensor inputs, 4 analog inputs, 6 digital inputs, 6 relay outputs, 2 analog outputs, Ethernet, Modbus/TCP, BACnet.
Temperature limits (environmental)	40 to 131°F, 4 to 55 °C
Water flow requirements	Minimum 3 GPM, maximum 1100 GPM*
Water temperature limits	40 to 120°F, 4 to 48°C
Water sample inlet/outlet connection	¾", 1", 2", 3", or 4" as specified by customer. Flange, FNPT or female cam-lock fittings available.
Water pressure-relief outlet connection	Two ¾" FNPT connections are supplied for pressure and air relief.
Water pressure requirements	Minimum 10 psig, maximum 150 psig.
Piping material	Schedule 80 PVC
Sensor requirements	Determined by sensor selection. Maximum four (4) sensor inputs + flow. Each unit includes one (1) magnetic flow meter.
Water quality requirements	Determined by sensor selection. NSF requirements must be specified during ordering.

\*Maximum flow rate determined by pipe size selected. See Table 2 for pipe size and flow requirements.

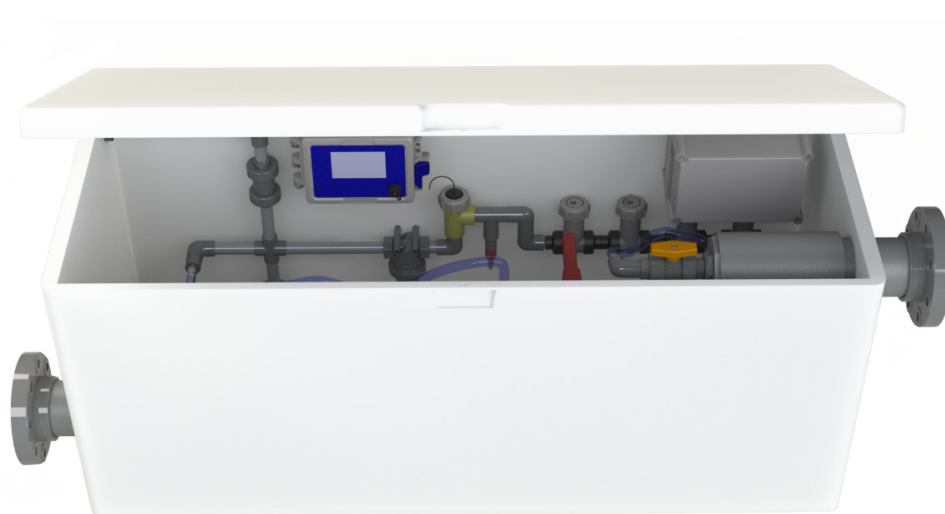
**CONTACT US TODAY!**

**Table 2 - Pipe size and flow requirements**

Pipe Size	Flow Rate Minimum	Flow Rate Maximum
¾"	3 GPM	13 GPM
1"	3 GPM	26 GPM
2"	3 GPM	170 GPM
3"	4 GPM	700 GPM
4"	5 GPM	1100 GPM

**Available Sensors**

- Free, total chlorine
- Disinfectants (peracetic acid, chlorine dioxide, bromine, ozone, etc.)
- pH
- Conductivity, total dissolved solids
- Flow (total, instantaneous)
- Turbidity, total suspended solids
- Oil-in-water
- Level (ultrasonic or level switch)
- Pressure
- Temperature
- Dissolved Oxygen
- Refractive Index
- ORP
- Corrosion
- Tagged Polymer (Fluorescent Dye)



MX StreamSentry interior

**CONTACT US TODAY!**

### Typical Model Number

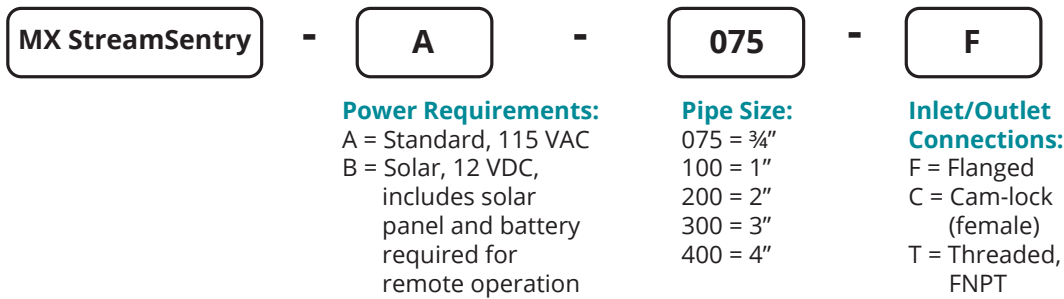
## MX StreamSentry-A-075-F

- Metex Stream Sentry with magnetic flow meter
- Standard, 115 VAC
- ¾" pipe size
- Flanged Connections

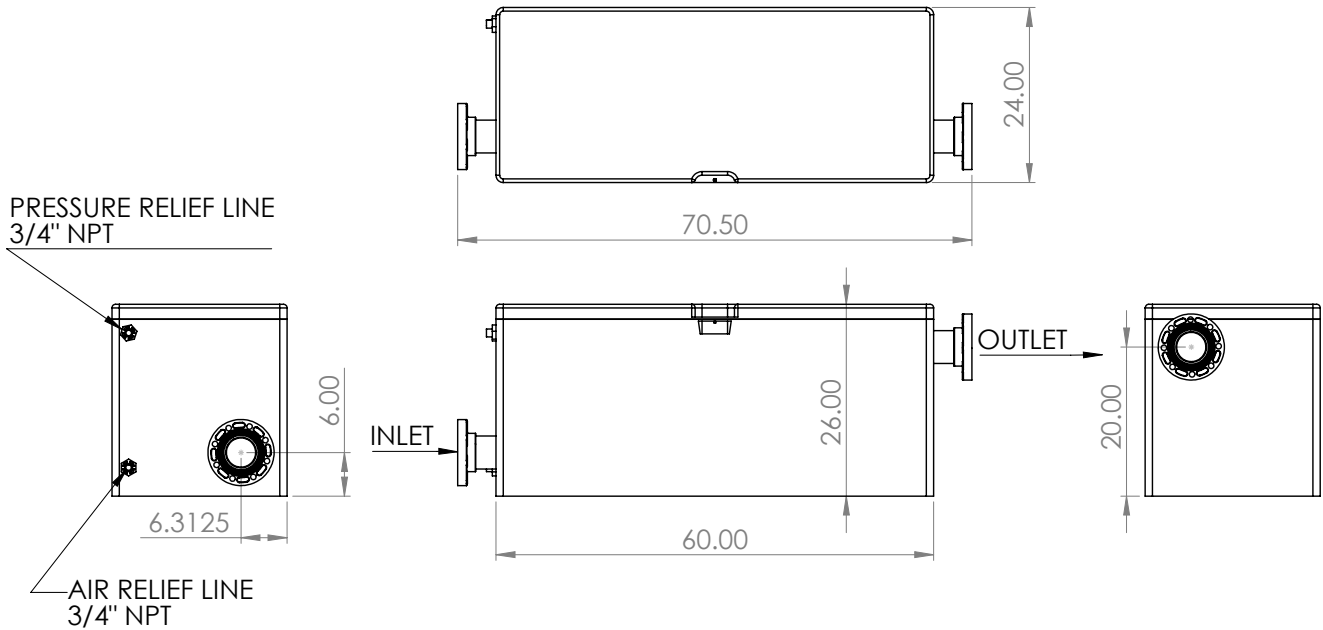


MX StreamSentry top angle

### Model Number Matrix



**Sensor Options:**  
Due to the number of sensor options and configurations, sensors are ordered a-la-carte as separate line items after speaking with one of our application engineers. All systems include a magnetic flow meter as standard.



**CONTACT US TODAY!**