

MX-pH System

Overview

The Metex-pH System is an economical, self-contained pH adjustment and neutralization system designed to regulate effluent pH levels in industrial water. The MX-pH can treat continuous flow rates of up to 20 gallons per minute and pH between 3 - 11 in water. The system is fully automatic, requiring minimal operator input to ensure water is always in compliance with discharge requirements. Multiple options are available to easily optimize the system for specific applications. Each MX-pH is shipped fully assembled, wired, and tested for quick field installation (indoor installation only).

Features of the Standard MX-pH

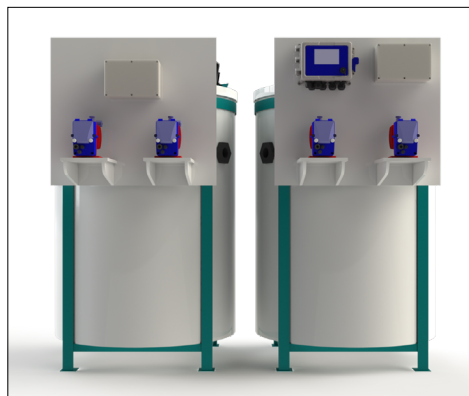
- Proportional pH controller with datalogging, alarms, and full colour touchscreen display
- Industrial pH sensor
- 175 imperial gallon high density polyethylene tank with internal mixing baffle
- Heavy-duty steel frame with pump shelf, hinged tank lid
- ¼ HP mixer
- Acid and caustic metering pumps (1.6 gallon per hour)
- Gravity discharge
- Plug-and-play design



MX-pH System with acid and caustic dosing pumps

Additional Options

- Level sensor(s)
- Totalizing and instantaneous flow meter
- Multiple pH sensors (inlet, outlet)
- Batch system with automatic valves
- Automatic 3-way diverter valve for off-specification water
- Pumped discharge
- Additional reaction tanks for highly concentrated wastewater



Dual MX-pH System



MX-pH showing ¼ HP mixer, injection ports and pH sensor lance

CONTACT US TODAY!

Typical Model Number

MX-pH-3-1

Standard pH adjustment system with acid and caustic pumps, one reaction tank.



Overhead view of MX-pH

Model Number Matrix

MX-pH

-

3

-

1

pH System:

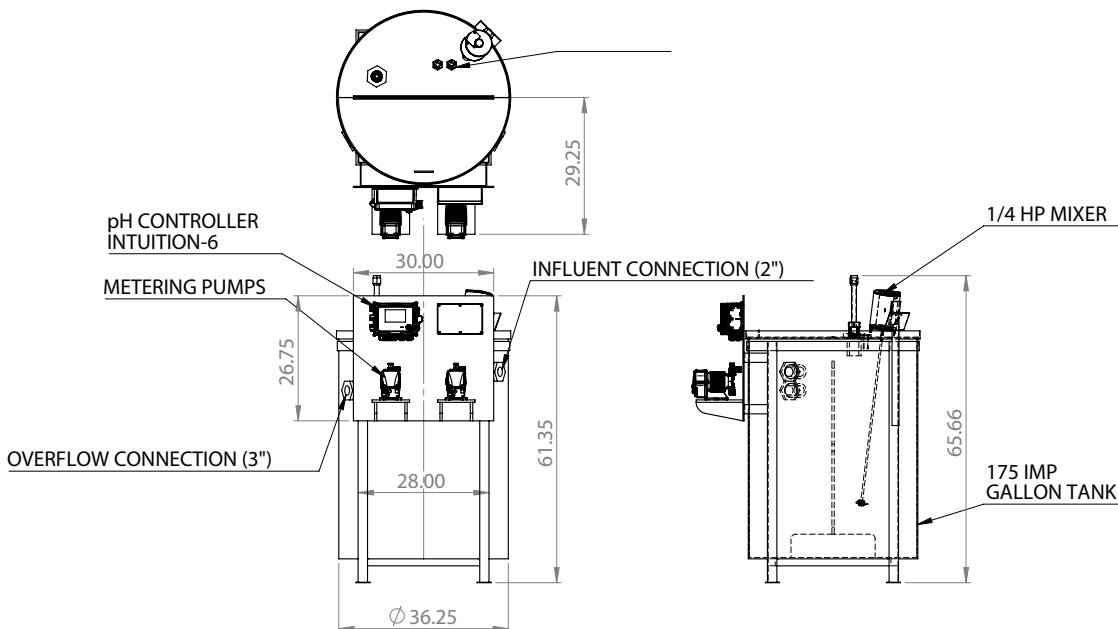
Standard continuous flow pH adjustment system with ¼ HP mixer, stand, tank, single pH sensor, and pH controller. Minimum power requirements are 115 VAC / 60 Hz / 3 - 6 Amps. Customer ethernet required for remote alarms and datalogging. Approximate shipping weight 280 lbs.

Pumps:

- 1 - Acid pump only (for high pH wastewater, between 7 - 11)
- 2 - Caustic pump only (for low pH wastewater, between 3 - 7)
- 3 - Acid and caustic pump required (for wastewater pH between 3 - 11)

Tank Selection:

- 1 - One reaction tank
- 2 - Two reaction tanks (in series)



*** Further additional options will depend on water quality, temperature, and customer requirements. Please speak to one of our experts for assistance with specifying custom selections or requests.**

Users are responsible for evaluating individual product suitability for specific applications. The MX-pH is not designed to manage solids separation and removal (coagulation/flocculation). Specifications subject to change without notice.

CONTACT US TODAY!