

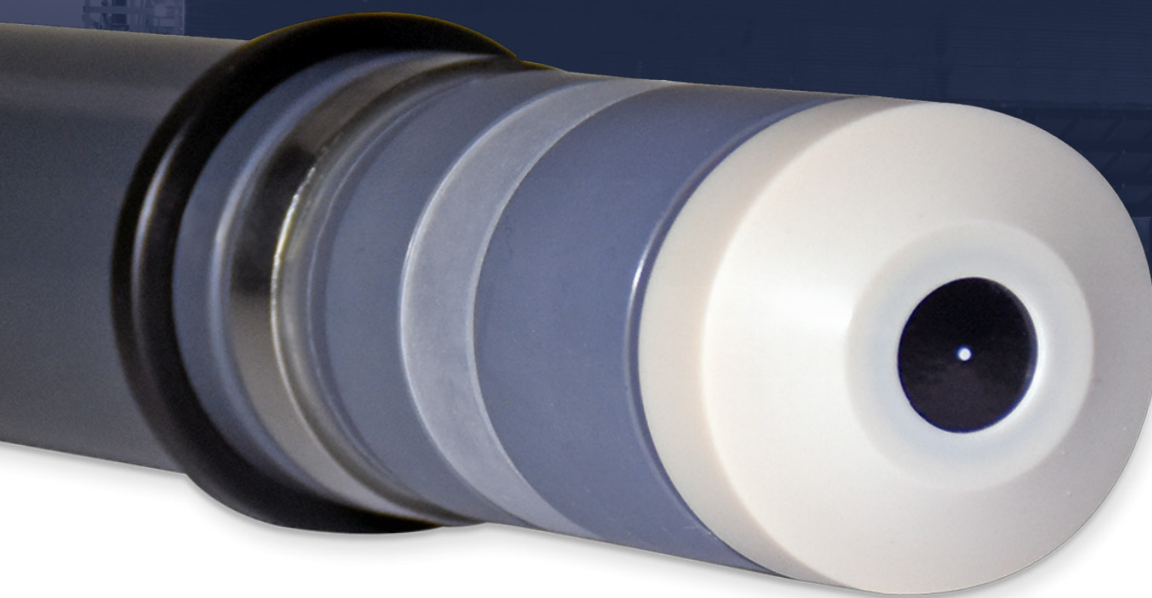
LOW MAINTENANCE

FAST RESPONSE

NO WASTE

AMPEROMETRIC DISINFECTION SENSORS

No costly reagents or tubing to replace
Continuous measurement technique
Sample can be returned to the process



Walchem's

Amperometric Disinfection Sensors offer a cost-effective and reliable solution to your disinfection control requirements. The sensors continuously and directly measure the chemical concentration, without the use of reagents.

In addition to our line of chlorine, bromine and stabilized bromine sensors, we offer sensors to handle a wide variety of oxidizers.

W A L C H E M

IWAKI America Inc.

Walchem integrates its advanced sensing, instrumentation, fluid handling and communications technologies to deliver reliable and innovative solutions to the global water treatment market. Our in-house engineering is driven by quality, technology and innovation.

For more information on the entire Walchem product line, visit walchem.com

Sensor Type	Chlorine Dioxide			Peracetic Acid				Hydrogen Peroxide			Ozone		Chlorite
Part Number	191532	191280	191534	191490	191338	191512	103781	103985	103987	103989	191746	191320	104217
Measurement Specifications													
Range (ppm)	0-2	0-20	0-200	0-200	0-2000	0-20000	0-2000	0-200	0-2000	0-20000	0-2	0-20	0-2
Resolution (ppm)	0.001	0.01	0.1	0.1	1	10	1	0.1	1	10	0.001	0.01	0.001
Calibration	Weekly			Weekly, Titration w/ Thiosulfate				Weekly			Weekly, DPD-4		Weekly
Interferences	Ozone (2500%)			Ozone (2500%), ClO ₂ (100%), H ₂ O ₂ (0.5%)				Cl ₂ , PAA and O ₃ (none may be present)			Cl ₂ (1.5%), ClO ₂ (6%)		Mn ²⁺ , Fe ²⁺ , Nitrite
Sample flow rate	30 to 100 liters/hour (0.13 to 0.44 gal/min)												
Sample pH	1-12			1-6				2-11			2-11		6-9
Response Time	1.5 min			3 min				8 min			50 sec		1 min
Conditioning Time	60 min			3 hours				5 hours			3 hours		24 hours
Electrical Specifications													
Power Requirements	± 5 VDC, 10 mA maximum												
Signal	0 to -2000 mV DC												
Maximum cable length	30 meters (100 feet)												
Extension cable	2 twisted pair, 22 AWG, shielded, 35 pF/ft. (Walchem 100084, Belden 8723)												
Mechanical Specifications													
Pressure	1 bar			1 bar				1 bar			1 bar		5 bar
Temperature	0-50 C			0-45 C		0-60 C		0-45 C			0-45 C		0-40 C
Sensor Materials	PVC, stainless steel			PVC, stainless steel		PEEK, stainless steel		PVC, stainless steel			PVC, stainless steel		Microporous hydrophilic membrane, PVC, PEEK, stainless steel
Flow manifold materials	PVC, Isoplast, FKM, acrylic, GFRPP, 316 SS												
Flow cell inlet	¼" NPTF												
Flow cell outlet	¾" NPTF												
Storage													
Sensor	Unlimited if stored dry without electrolyte at 5-40 °C (41-104 °F)												
Electrolyte	One year in original bottle, protected from sunlight at 5-35 °C (41-95 °F)												
Membrane cap	Unlimited if unused in original packaging at 5-40 °C (41-104 °F)												

ORDERING INFORMATION

For W100, W600 and W900 Series Controllers

Choose one sensor:

Refer to the specification chart for part numbers

Choose one flow cell:

W600-DS-PN Flow switch manifold on panel, 3' cable
or W600-DS-FN Flow cell, 20' cable



Scan the QR code with your smartphone camera to access more detailed information!

